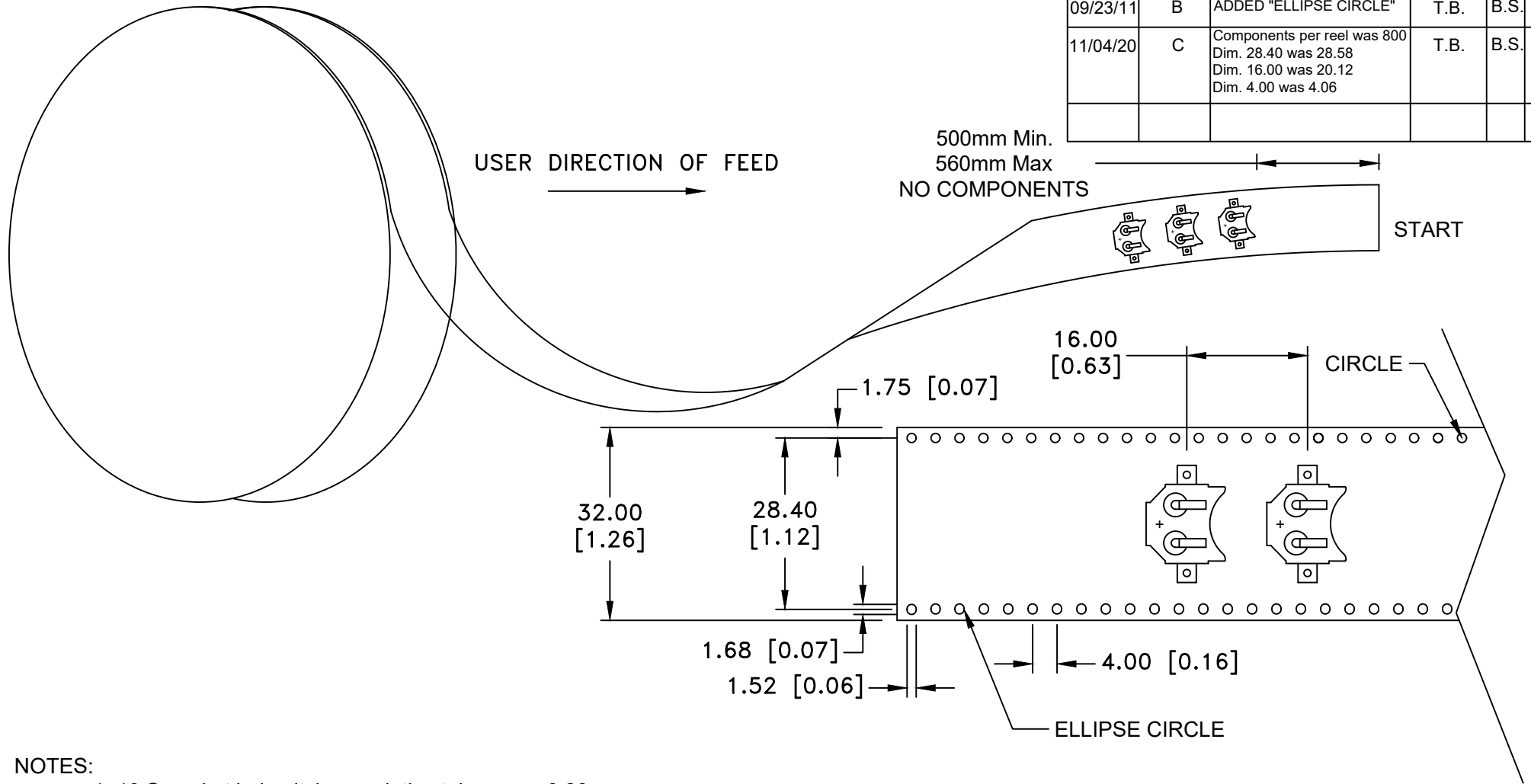



Date	SYM	REVISION RECORD	AUTH	DR.	CK.
10/22/05	A	ADDED "ROHS COMPLIANT"	T.B.	B.S.	
09/23/11	B	ADDED "ELLIPSE CIRCLE"	T.B.	B.S.	
11/04/20	C	Components per reel was 800 Dim. 28.40 was 28.58 Dim. 16.00 was 20.12 Dim. 4.00 was 4.06	T.B.	B.S.	



NOTES:

1. 10 Sprocket hole pitch cumulative tolerance  $\pm 0.20\text{mm}$
2. Carrier camber not to exceed 1mm in 250mm
3. Material: Blue Anti-static Polystyrene
4. Thickness:  $0.35 \pm 0.05\text{mm}$
5. Component loader per 13" reel: 1000 pcs
6. All dimensions per EIA-481-C
7. ROHS COMPLIANT

Tolerance (Except as noted)	 <b>Memory Protection Devices, Inc</b> 200 Broad Hollow Road, Farmingdale, New York 11735		
decimal $\pm .5$ (.020)		Scale	Drawn By B.S.
Fractional $\pm .8$ (.030)	Title TAPE AND REEL SPECIFICATION FOR SURFACE MOUNT BATTERY HOLDER FOR BK-885		
Angular $\pm 3^\circ$	Date 11/04/20	Drawing Number BK-885-TR-REEL	
		Approved By T.B.	